



# CONIFER LODGES

## **Accessibility Guide for Lord Galloway 35**

[info@solidluxury.co.uk](mailto:info@solidluxury.co.uk), 03332101055, [www.solidluxury.co.uk](http://www.solidluxury.co.uk)

**Contact for accessibility enquiries: The Solid Luxury Team**



## Welcome

Lord Galloway 35 is a 4 bedroom lodge with private hot tub located at Conifer Lodges on the outskirts of Newton Stewart, Dumfries & Galloway.

Lord Galloway 35 is on 2 levels. The downstairs features:

Spacious open plan living, dining area with fully equipped kitchen. There are 2 downstairs bedrooms each with twin beds (can be set as superking on request) and there is a shared bathroom with shower enclosure.

Upstairs is accessed via a spiral staircase and there are a further 2 bedrooms - 1 superking and 1 king. Each bedroom has an ensuite shower room and the master bedroom also features a separate bath.

Outside there is a large decking area with outside furniture and private hot tub.

## At a Glance

### Level Access

- There is level access from the main entrance to:
  - Conifer Lodges Main Reception Area
  - Bedroom: Downstairs Bedrooms
  - Living Area

### Bedrooms

- We have non-allergic bedding.

### Level access bedrooms

- From the main entrance to the bedroom, there is level access.
- The route to the bedroom is 750mm wide, or more.
- The bedroom door is 750mm wide, or more.
- There is unobstructed floor space 1200mm by 900mm, or more.

### Hearing

- Some (bedroom) TVs have subtitles.
- Some staff have disability awareness training.

### General

- Staff are available 24 hours a day.
- Some staff have disability awareness training.
- We have emergency evacuation procedures for disabled visitors.

## Getting here

Conifer Lodges  
Minnigaff  
Newton Stewart  
DG8 6AN

### *Travel by public transport*

- The closest train station is Barrhill which is around 20 miles from Conifer Lodges. There is a bus stop at Racegreen Avenue (DG8 6PD) which is around a 15 minute walk uphill.



### *Travel by taxi*

- You can get a taxi with McLeans Taxis by calling 01671404131.



### *Parking*

- We have a car park. The parking is less than 50 metres from the main entrance. Parking is free.
- From the car park to the entrance, there is level access. There is a permanent ramp.
- The path is sloped.
- Parking for 2 cars is available directly in front of the lodge.



Showing car parking area and path up to Lodge 35

## **Arrival**



### *Path to main entrance*

- From the street to the main entrance, there is level access.
- There is a permanent ramp.
- The path is sloped.



### *Main entrance*

- The door is 1600mm wide.
- The main door is side hung and manual.
- When you arrive, we can help carry your luggage.
- The main entrance has outward opening double patio doors - with both doors open the width is 1600mm and with a single door open the width is 755mm. There is a threshold bar but a portable ramp for this can be requested. Staff are on site daily between 8:00am and 5:00pm to offer assistance.



Showing entrance to ramp up to lodge

## Getting around inside

### *Conifer Lodges Main Reception Area*

- From the main entrance to reception, there is level access. There is a permanent ramp.
- The check-in desk has a low section for wheelchair users. You can sit down at reception.
- Reception is open from 9 am until 5 pm daily with staff available to offer any assistance required.

### *Bedrooms*

- All bedrooms have windows.
- Bedrooms have ceiling lights, bedside lamps and natural daylight.
- Lights are LED. Some TVs have subtitles.
- All bedrooms are non-smoking.
- We have non-allergic bedding.
- Some bedrooms have fitted carpets.
- We can move the bedroom furniture, to improve accessibility.
- From the main entrance to this area, there is level access.

### *Accessible bedrooms*

#### *Accessible bedroom Downstairs Bedrooms*

- The route to the bedroom is 780mm wide, or more. The bedroom door is 800mm wide. There is 845mm at the side of the bed. The bed is 600mm high. There is 150mm under the bed.
- The bedroom is flexible (either double or twin). The bathroom is separate. It is not an ensuite.
- The bathroom door is 780mm wide.
- The bathroom has a separate shower. There is a shower chair available. The direction of transfer onto the toilet is to the front only. The toilet seat is 420mm high.

- The basin is 850mm high. The taps are lever operated. There is no space under the basin.
- The walls and the bathroom fittings have high colour contrast.
- Quadrant shower enclosure with opening width of 480mm. Tap is a lever operated waterfall mixer.



Downstairs Shower Enclosure



Downstairs Basin



Downstairs Bedroom to Left Hand Side

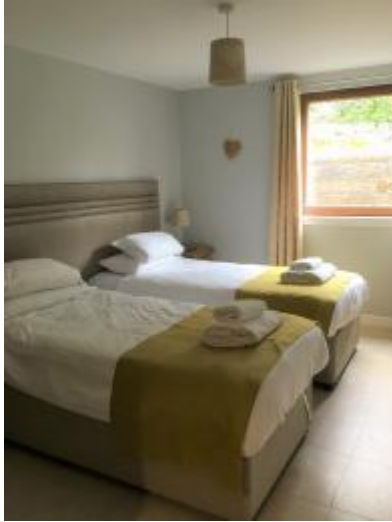


Downstairs Bedroom to Left Hand Side



Entrance to Downstairs Bedroom on Right Hand Side





Downstairs Bedroom on Right Hand Side

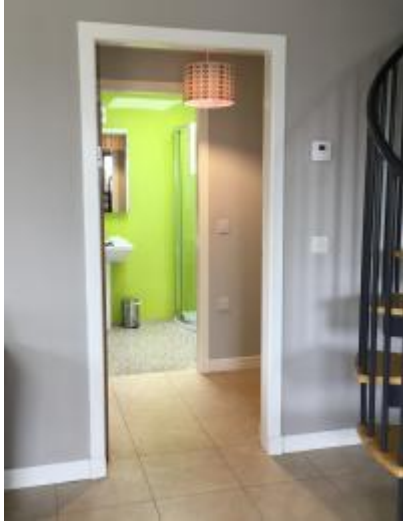


Downstairs Bedroom on Right Hand Side



Downstairs Bedroom on Right Hand Side





Door leading to Downstairs Shower Room and Bedrooms



Downstairs Shower



Tap in Downstairs Bathroom

## Self catering kitchen

### *Kitchen*

- We have an open plan kitchen.
- From the main entrance to the kitchen, there is level access.
- The route is 1450mm wide, or more.
- The table and plates have high colour contrast.
- The kitchen worktops are a height of 935mm.  
Hob (induction) and sink are at worktop height (935mm).  
Oven is drop down opening.
- Dining table seats 8. The height of dining table is 625mm.



Kitchen



Kitchen



Dining Area



Freezer



Fridge



Microwave



Oven and Hob



Dishwasher



Dining Chair and Table

### Lounge

#### *Living Area*

- From the main entrance to the lounge, there is level access.
- The main entrance opens straight into the lounge area.  
There is a wall mounted Freeview TV in the corner beside main entrance.



Lounge from Entrance



Lounge from Dining Area



Spiral staircase leading to upstairs bedrooms



Patio Door leading to decking and hot tub



TV in living area

## Getting around outside

### *Decking Area*

- The main entrance opens onto an enclosed decking area. There is a threshold lip but a portable ramp can be requested for this. Once on the decking it is all on one level with a ramp to the parking area.



Decking leading to patio doors and hot tub





Entrance to Hot Tub Area



Steps for Hot Tub

## Customer care support

### *Accessibility equipment*

- Shower stool
- Suction grab handles for bathroom
- Non slip bath/shower mats
- Portable threshold ramp
- The nearest toilet area for assistance dogs is directly in front/to the side of the lodge.

### *Customer care support*

- Some staff have disability awareness training.
- Staff are available 24 hours a day.
- Staff are available 24 hours a day and an emergency contact number is provided in the welcome folder.